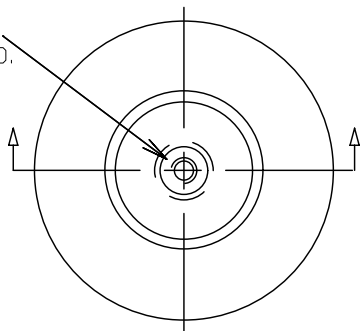
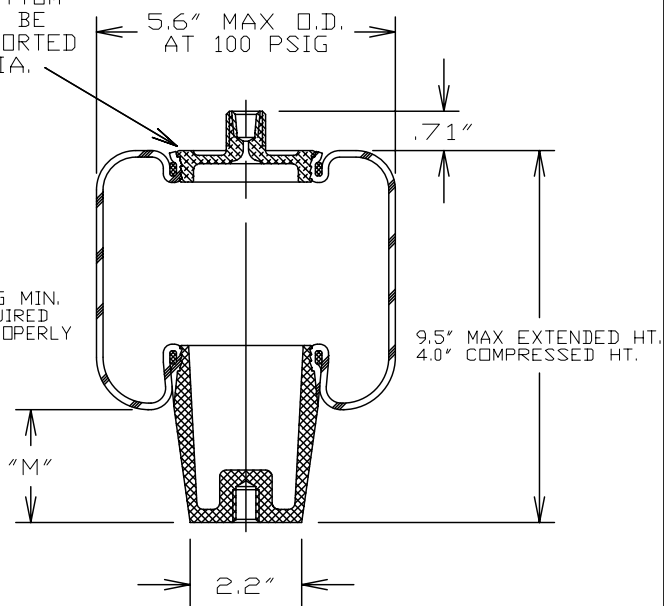


3/4"-16 UNF-2A
x 5/8" MIN. THD.
COMBO STUD
1/8"-27 NPTF
AIR FITTING
(INSIDE)



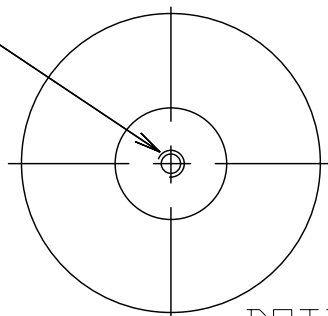
TOP VIEW

TOP AND BOTTOM
SURFACE TO BE
FULLY SUPPORTED
TO 4.1" DIA.



SIDE VIEW

1/2"-13 UNC-2B
x 5/8" DEEP



BOTTOM VIEW

ASSEMBLY NUMBER	ELASTOMER	AIR FITTING	BUMPER INCLUDED
1S5-005	WINGPRENE	1/8"-27 NPTF COMBO STUD	NO

CONSULT GOODYEAR BEFORE USING
AS AN ACTUATOR

SPRING FEATURES:

- LOAD RANGE (ISOLATOR).....160-1100 lb
- DESIGN HEIGHT RANGE (ISOLATOR).....6.2-7.2 in
- USEABLE STROKE (ACTUATOR).....5.5 in
- ASSEMBLY WEIGHT.....2.5 lb
- TEMPERATURE RANGE*.....
- DIECAST END COMPONENTS

* NOTE: PRODUCT LIFE MAY BE SHORTENED WHEN
OPERATING AT OR NEAR EXTREME
TEMPERATURES. SEE TEMPERATURE
RANGE GUIDELINES SECTION.

OTHER OPTIONS:

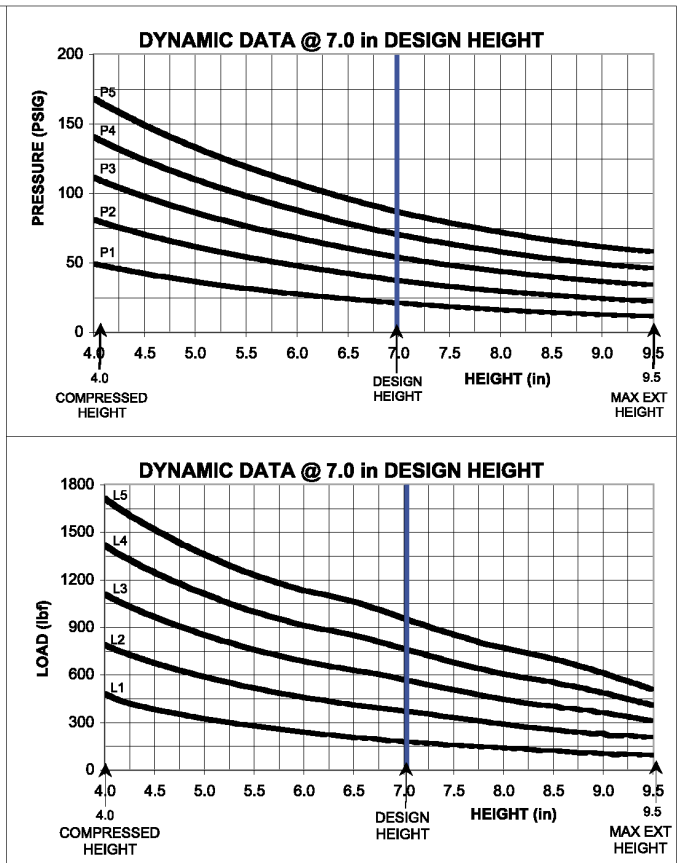
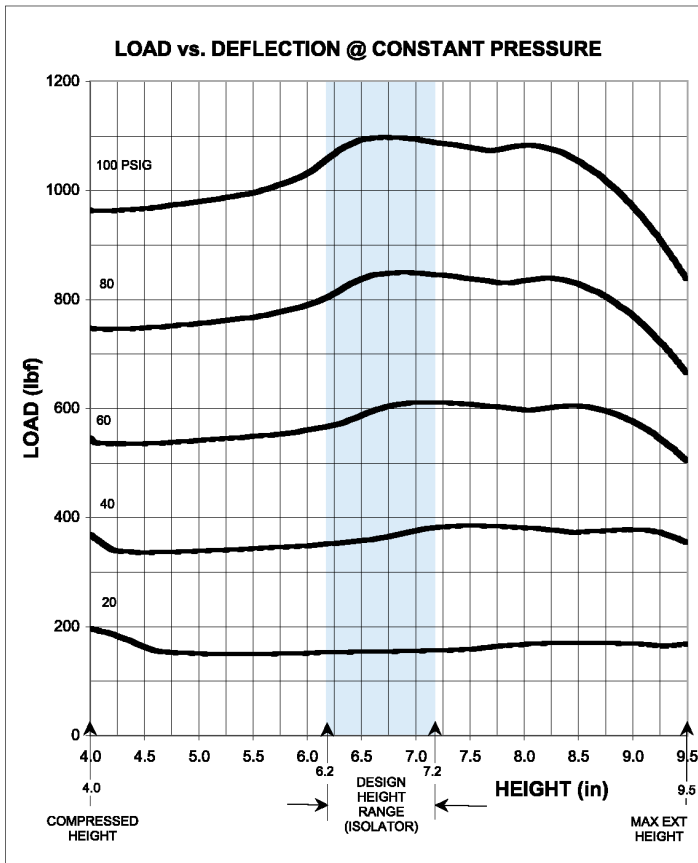
- COMPOSITE END COMPONENTS
- INTEGRAL QUICK CONNECT FITTINGS
- SMOOTH MOUNTING STUDS FOR USE WITH STAR CLIPS (SPEEDS ASSEMBLY)
- AIR FITTING IN PISTON
- INTERNAL RUBBER BUMPER

RECOMMENDED MAX. TORQUE VALUES

1/2"-13 UNC BLIND TAP	3/4"-16 UNF COMBO STUD	1/8"-27 UNC AIR FITTING
360 in-lb 30 ft-lb	360 in-lb 30 ft-lb	180 in-lb 15 ft-lb

NOTE: SEE GUIDELINES FOR PROPER APPLICATION OF
THIS PRODUCT

GRAPHS FOR REFERENCE ONLY - USE THE CHART DATA BELOW FOR DESIGN WORK



****NOTE: MAXIMUM INFLATION PRESSURE IS 100 PSIG. MAXIMUM JOUNCE PRESSURE IS 200 PSIG. IF YOUR APPLICATION WILL EXCEED THESE LIMITS, CONSULT A GOODYEAR REPRESENTATIVE FOR APPLICATION ASSISTANCE.**

CONSTANT PRESSURE CHARACTERISTICS

Assembly Height (in)	Meniscus Height "M" Dim. @ 100 PSIG	Volume @ 100 PSIG (in ³)	Nominal Force (lb)				
			@ 20 PSIG	@ 40 PSIG	@ 60 PSIG	@ 80 PSIG	@ 100 PSIG
9.5	3.3	109	160	340	500	660	800
8.5	3.1	104	180	400	620	800	1050
8.0	2.8	93	180	400	620	850	1100
7.2	2.3	84	170	400	620	850	1100
7.0	2.1	82	170	400	620	850	1100
6.2	1.7	72	160	360	620	850	1100
5.5	1.1	64	160	360	560	800	1000
5.0	0.8	57	160	340	560	750	1000
4.5	0.4	51	170	340	560	750	950
4.0	0.1	45	190	360	540	750	950

DYNAMIC CHARACTERISTICS

Design Height (in)	Load (lb)	Pressure (PSIG)	Spring Rate (lb/in)	Natural Frequency	
				cpm	Hz
7.2	200	21	50	95	1.58
	400	39	100	94	1.57
	550	57	140	91	1.52
	750	73	180	89	1.48
7.0	200	21	50	95	1.58
	400	38	105	95	1.58
	550	55	150	94	1.57
	750	72	190	91	1.52
6.2	200	23	55	99	1.65
	400	40	80	85	1.42
	550	56	105	79	1.32
	750	73	135	78	1.30
4.0	950	90	170	78	1.30